

# REPORT No 11682

*Date of issue: May 22, 2026*

*Status: FINAL REPORT*

\*\*\*\*\*

## IEC 60068-2-6

### ENVIRONMENTAL TESTING

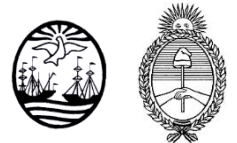
### TEST Fc: VIBRATION SINUSOIDAL

### Program: SQO-EV6 (Round 9)

\*\*\*\*\*

This document is issued by the Company subject to its Terms and Conditions, available on request or accessible at <https://www.ptsouthquality.com/terms-and-conditions>. The Company's sole responsibility is to its Client and this document does not exonerate parties to a transaction from exercising all their rights and obligations under transaction documents. This document cannot be reproduced except in full, without prior written approval of the Company. Any unauthorized alteration, forgery or falsification of the content or appearance of this document is unlawful and offenders may be prosecuted to the fullest extent of the law.

Copyright © 2026 South Quality, Buenos Aires, ARGENTINA



<b>Prepared by:</b>	<b>Reviewed by:</b>	<b>Approved by:</b>
<b>Berenice Ferrel</b> Assistant Technician	<b>Lic. Esther Casas</b> Physics expert	<b>Eng. Emiliano Medina</b> Quality Assurance Lead

# TABLE OF CONTENTS

<b>1. FOREWORD</b>	<b>3</b>
<b>2. ORGANIZATION</b>	<b>3</b>
<b>3. OBJECTIVE</b>	<b>3</b>
<b>4. PARTICIPANTS</b>	<b>4</b>
<b>5. HOMOGENEITY</b>	<b>5</b>
<b>6. SAMPLE INFORMATION</b>	<b>6</b>
<b>7. IMAGES</b>	<b>6</b>
<b>8. ASSIGNED RESULTS</b>	<b>7</b>
<b>9. STATISTICS</b>	<b>7</b>
<b>10. PARTICIPANTS' RESULTS</b>	<b>8</b>
<b>11. EVALUATION OF PERFORMANCE</b>	<b>9</b>
<b>12. CONCLUSIONS</b>	<b>10</b>
<b>APPENDIX A</b>	
<b>A1 - PARTICIPANT DATA</b>	<b>11</b>
<b>A2 - INSTRUCTIONS</b>	<b>11</b>
<b>A3 - PARTICIPANT RESULTS (TR #ENV-022-2026)</b>	<b>15</b>
<b>A4 - PARTICIPANT RESULTS (TR #ENV-023-2026)</b>	<b>22</b>
<b>APPENDIX B</b>	<b>29</b>

## 1. FOREWORD

This report summarizes the results of the **SQO-EV6 (Round 9)** proficiency testing program on the adequacy of specimens to resist specified severities of sinusoidal vibration. This program is carried out under a simultaneous participation format, as described in clause A.2.2 of ISO/IEC 17043: 2023 (Types of PT schemes).

**South Quality** conducted the testing program in March/April 2026 with the aim of assessing the laboratory's ability to competently perform the designated tests.

## 2. ORGANIZATION

Program Coordinator: Lic. Esther Casas  
 Assistant Technician: Berenice Ferrel  
 Statistics: Lic. Manuel Tozaki  
 Supervision: Eng. Emiliano Medina

## 3. OBJECTIVE

The objective of this proficiency testing program is to visually and functionally inspect the equipment under test, using the following standard:

Standard
IEC 60068-2-6: 2007

To verify this, electronic equipment has been selected.

Participants in this program have not been previously informed about the expected behavior of the samples they receive.

As part of the usual practice of this program, three different sample combinations may be sent to participants.

- i. Sample A (PASS) + Sample B (PASS).
- ii. Sample A (PASS) + Sample B (FAIL).
- iii. Sample A (FAIL) + Sample B (FAIL).

#### 4. PARTICIPANTS

In the present round, 23 laboratories have participated with the following details:

CODE	Country	ISO 17025 accredited	Results delivered
01	Australia	Yes	Yes
02	Malaysia	Yes	Yes
03	Netherlands	Yes	Yes
04	France	Yes	Yes
05	Portugal	Yes	No
06	Argentina	No	Yes
07	France	Yes	Yes
08	Spain	Yes	Yes
09	Peru	No	No
10	Bangladesh	Yes	Yes
11	Chile	Yes	Yes
12	Germany	Yes	Yes
13	Spain	Yes	No
14	South Africa	No	Yes
15	Türkiye	Yes	Yes
16	Germany	Yes	Yes
17	Thailand	Yes	Yes
18	Belgium	Yes	Yes
19	Italy	Yes	Yes
20	China	Yes	No
21	Brazil	No	Yes
22	Mexico	Yes	Yes
23	Finland	Yes	Yes

## 5. HOMOGENEITY

A homogeneity study was conducted to verify the compliance of the samples with the requirements of the IEC 60068-2-6 standard, using an ISO 17025-accredited laboratory.

Six batches, each consisting of 35 units of different electronic equipment, were prepared and tested to assess the result homogeneity.

The control process followed ISO 33405: 2024, clauses 7.4.1.1 / 7.4.1.2. Stratified random sampling was applied, and the samples were selected using random-number-generation software.

The results of this test are presented below:

Size of each batch: **35 units**  
 Tested samples from each batch: **8 units**  
 Test conditions: **10-500Hz, 10m/s<sup>2</sup>, 1 oct/min, 3 axes, 15 min/axis**

DETERMINATION	HOMOGENEITY OF RESULTS IN THE SAMPLES ANALYZED		
	BATCH: LEV3018	BATCH: LEV3019	BATCH: LEV3020
Visual inspection	YES	YES	YES
Functional performance	NO	YES	YES

Size of each batch: **35 units**  
 Tested samples from each batch: **8 units**  
 Test conditions: **10-500Hz, 10m/s<sup>2</sup>, 1 oct/min, 3 axes, 15 min/axis**

DETERMINATION	HOMOGENEITY OF RESULTS IN THE SAMPLES ANALYZED		
	BATCH: LEV3468	BATCH: LEV3469	BATCH: LEV3470
Visual inspection	YES	YES	YES
Functional performance	YES	NO	YES

Samples for this program are taken from the selected batches identified as **LEV3020**, and **LEV3468**.

The analysis of the test data indicated that the selected samples exhibited sufficient homogeneity for the program. Therefore, the results of participants identified as outliers cannot be attributed to sample variability.

## 6. SAMPLE INFORMATION

The following samples were sent for testing (Participant **Code 18**):

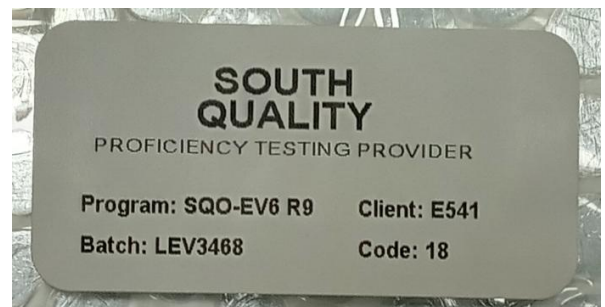
Batch:	LEV3020
Sample ID:	18
Characteristics:	Switching power supply In: 110/220V; 50/60Hz; Class 1 - Out: 12Vcc; 5A; 60W Trademark: SIMALED Model: 12V-5A(S)-60W

Batch:	LEV3468
Sample ID:	18
Characteristics:	ATX power supply 220V - 50Hz - 600W Trademark: ACONCAWA Model: ATX 600 X 24 P 2S

## 7. IMAGES



## SAMPLES



## 8. ASSIGNED RESULTS

The assigned results are obtained from the results reported by all participants (**Consensus values**).

## 9. STATISTICS

The results must be treated as qualitative.

For qualitative results, the comparison will be made directly against the assigned results, so any difference will be evaluated as **Unsatisfactory**.

The assessment involves assigning a compliance verdict (PASS or FAIL) to each verification parameter (Visual and functional performance) carried out by each participant.

## 10. PARTICIPANTS' RESULTS

LABORATORY CODE	LEV3020		LEV3468	
	Visual inspection	Functional performance	Visual inspection	Functional performance
01	PASS	PASS	PASS	PASS
02	PASS	PASS	PASS	FAIL
03	PASS	PASS	PASS	PASS
04	PASS	PASS	PASS	PASS
06	PASS	PASS	PASS	FAIL
07	PASS	PASS	PASS	PASS
08	PASS	PASS	PASS	PASS
10	PASS	PASS	PASS	PASS
11	PASS	PASS	PASS	FAIL
12	PASS	PASS	PASS	PASS
14	PASS	PASS	PASS	FAIL
15	PASS	PASS	PASS	PASS
16	PASS	PASS	PASS	PASS
17	PASS	PASS	PASS	PASS
18	PASS	PASS	PASS	PASS
19	PASS	PASS	PASS	PASS
21	PASS	PASS	PASS	PASS
22	PASS	PASS	PASS	PASS
23	PASS	PASS	PASS	PASS

ASSIGNED RESULTS			
LEV3020		LEV3468	
Visual inspection	Functional performance	Visual inspection	Functional performance
PASS	PASS	PASS	PASS

## 11. EVALUATION OF PERFORMANCE

Laboratory Code 01: The laboratory obtained **SATISFACTORY** results in the verification of all parameters.

Laboratory Code 02: The laboratory obtained **UNSATISFACTORY** result in the functional performance verification of sample **LEV3468**. However, **SATISFACTORY** results were obtained for the remaining parameters.

Laboratory Code 03: The laboratory obtained **SATISFACTORY** results in the verification of all parameters.

Laboratory Code 04: The laboratory obtained **SATISFACTORY** results in the verification of all parameters.

Laboratory Code 05: The laboratory did not send the results before the deadline.

Laboratory Code 06: The laboratory obtained **UNSATISFACTORY** result in the functional performance verification of sample **LEV3468**. However, **SATISFACTORY** results were obtained for the remaining parameters.

Laboratory Code 07: The laboratory obtained **SATISFACTORY** results in the verification of all parameters.

Laboratory Code 08: The laboratory obtained **SATISFACTORY** results in the verification of all parameters.

Laboratory Code 09: The laboratory did not send the results before the deadline.

Laboratory Code 10: The laboratory obtained **SATISFACTORY** results in the verification of all parameters.

Laboratory Code 11: The laboratory obtained **UNSATISFACTORY** result in the functional performance verification of sample **LEV3468**. However, **SATISFACTORY** results were obtained for the remaining parameters.

Laboratory Code 12: The laboratory obtained **SATISFACTORY** results in the verification of all parameters.

Laboratory Code 13: The laboratory did not send the results before the deadline.

Laboratory Code 14: The laboratory obtained **UNSATISFACTORY** result in the functional performance verification of sample **LEV3468**. However, **SATISFACTORY** results were obtained for the remaining parameters.

Laboratory Code 15: The laboratory obtained **SATISFACTORY** results in the verification of all parameters.

Laboratory Code 16: The laboratory obtained **SATISFACTORY** results in the verification of all parameters.

Laboratory Code 17: The laboratory obtained **SATISFACTORY** results in the verification of all parameters.

Laboratory Code 18: The laboratory obtained **SATISFACTORY** results in the verification of all parameters.

Laboratory Code 19: The laboratory obtained **SATISFACTORY** results in the verification of all parameters.

Laboratory Code 20: The laboratory did not send the results before the deadline.

Laboratory Code 21: The laboratory obtained **SATISFACTORY** results in the verification of all parameters.

Laboratory Code 22: The laboratory obtained **SATISFACTORY** results in the verification of all parameters.

Laboratory Code 23: The laboratory obtained **SATISFACTORY** results in the verification of all parameters.

## 12. CONCLUSIONS

The overall performance in the **SQO-EV6 (Round 9)** program, based on expected results from the participating laboratories, was as follows:

- Participants Codes **01, 03, 04, 07, 08, 10, 12, 15, 16, 17, 18, 19, 21, 22**, and **23** have obtained **SUFFICIENT** performance according to the expected results, and no action is required;
- Participants Codes **02, 06, 11**, and **14** have obtained **INSUFFICIENT** performance in comparison with the expected results and must take corrective action for the tests in which their results differ from the expected values (see Appendix B).

The criteria used for the evaluation of the overall performance are the following:

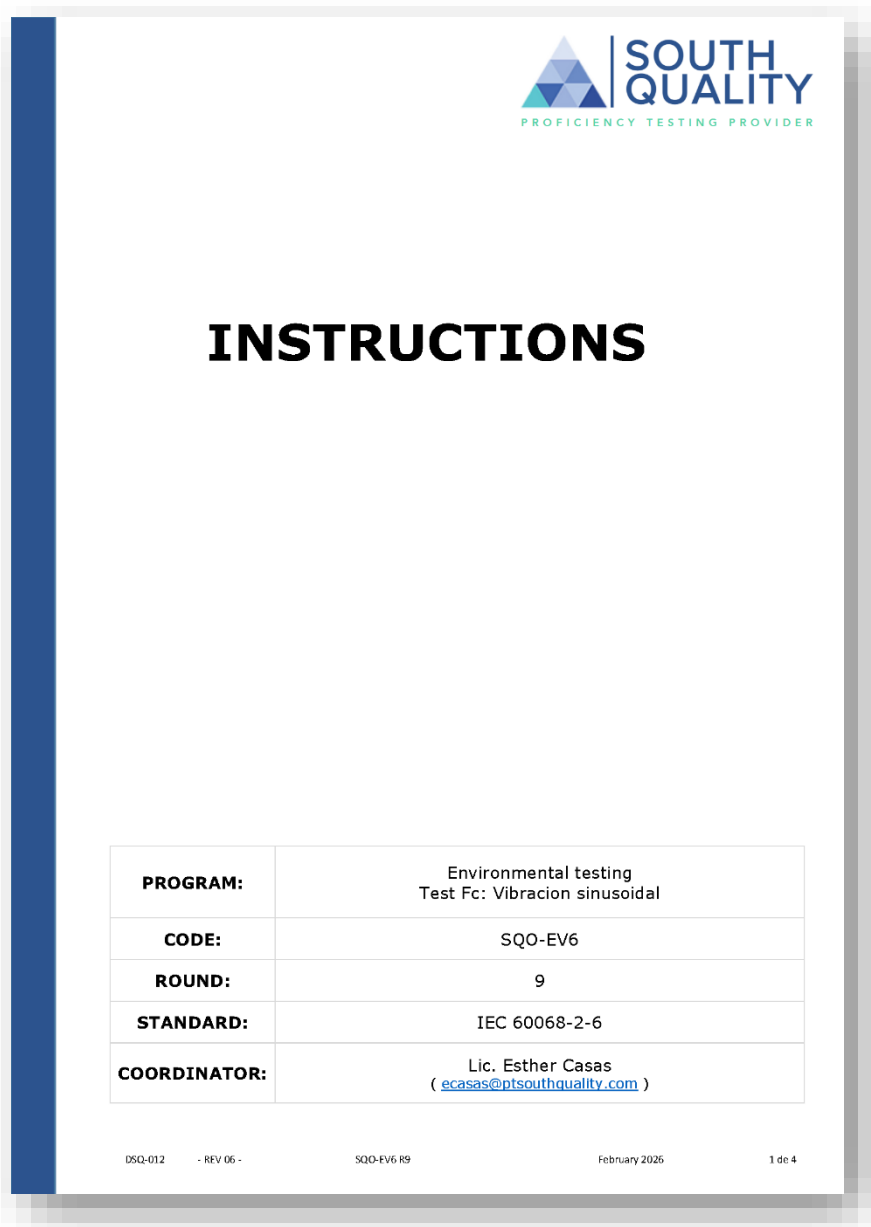
- **SUFFICIENT** performance: No unsatisfactory results were obtained.
- **INSUFFICIENT** performance: An unsatisfactory result was obtained.

# APPENDIX A

## A1 - PARTICIPANT DATA

Company: **Blue Guide EMC lab**  
Laboratory: **Blue Guide EMC lab**  
Country: Belgium  
Client ID: E541  
Contact person: Christopher Stokoe - Technical Manager - SAF/ENV  
( [christopher.stokoe@bgemc.com](mailto:christopher.stokoe@bgemc.com) )

## A2 - INSTRUCTIONS



The image shows the cover page of a document titled "INSTRUCTIONS". At the top right, there is the South Quality logo, which consists of a stylized triangle made of smaller triangles, followed by the text "SOUTH QUALITY" and "PROFICIENCY TESTING PROVIDER" below it. The word "INSTRUCTIONS" is centered in a large, bold, black font. Below this, there is a table with five rows and two columns. The first column contains labels: PROGRAM, CODE, ROUND, STANDARD, and COORDINATOR. The second column contains the corresponding values. At the bottom of the page, there is a footer with technical details: DSQ-012 - REV 06 - SQO-EV6 R9 February 2026 1 de 4.

<b>PROGRAM:</b>	Environmental testing Test Fc: Vibracion sinusoidal
<b>CODE:</b>	SQO-EV6
<b>ROUND:</b>	9
<b>STANDARD:</b>	IEC 60068-2-6
<b>COORDINATOR:</b>	Lic. Esther Casas ( <a href="mailto:ecajas@ptsouthquality.com">ecajas@ptsouthquality.com</a> )

DSQ-012 - REV 06 - SQO-EV6 R9 February 2026 1 de 4

### 1 - General

This document serves as a guide for managing the results of the **SQO-EV6 (Round 9)** program.

### 2 - Standard

**IEC 60068-2-6: 2007**

### 3 - Participant

BLUE GUIDE EMC LAB	CODE 18
--------------------	---------

### 4 - Tests involved

TEST
Verification of the adequacy of specimens to resist specified severities of sinusoidal vibration

### 5 - Samples

CODE	SAMPLE	QUANTITY
LEV3020-18	Switching power supply In: 110/220V; 50/60Hz; Class 1 - Out: 12Vcc; 5A; 60W Trademark: SIMALED Model: 12V-5A(S)-60W	1
LEV3468-18	ATX power supply 220 V - 50Hz - 600W Trademark: ACONCAWA Model: ATX 600 X 24 P 2S	1

### 6 - Notes

- a) The deadline for the delivery of results is **April 20, 2026**.
- b) Participants must submit the results using the usual report employed by their laboratory.
- c) The samples are to be handled as routine lab samples, with all testing, documentation, and reporting adhering to **IEC 60068-2-6**.
- d) Samples must be retained until the end of the program, which concludes with the submission of the final report.
- e) To review the results, the submission of images of the tests is appreciated. These images can be attached at the end of this document or sent via email.

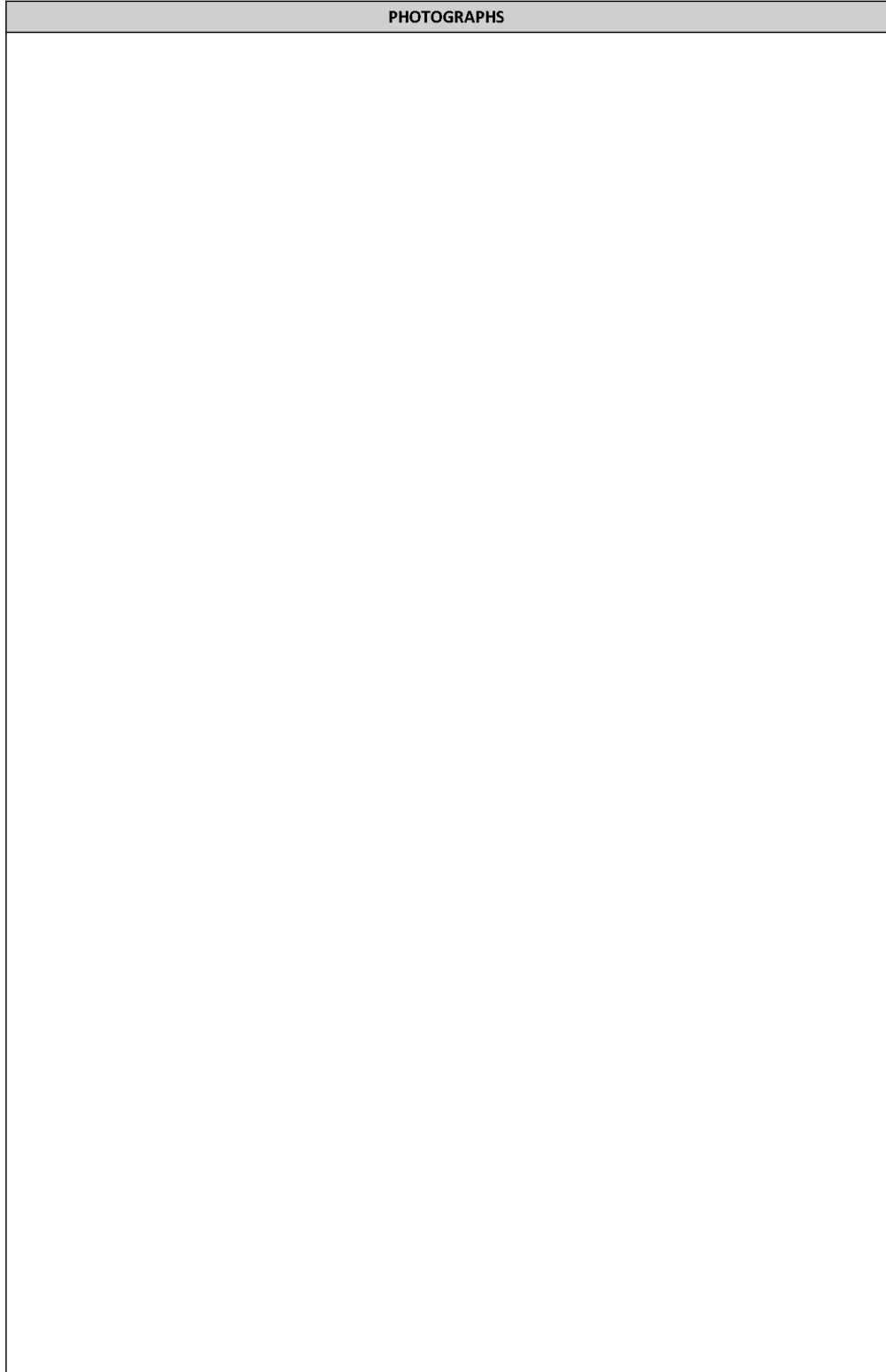
### 7 - Test conditions

CODE	CONDITION	TEST SEVERITIES
LEV3020-18	Powered-off	10-500 Hz, 10 m/s <sup>2</sup> , 1 oct/min round-trip, 3 axes, 15 min/axis effective (single-point control at fixing point, rigid horizontal mounting)
LEV3468-18	Powered-off	10-500 Hz, 10 m/s <sup>2</sup> , 1 oct/min round-trip, 3 axes, 15 min/axis effective (single-point control at fixing point, rigid horizontal mounting)




### 8 - Parameters to determine

CODE	PARAMETERS (BEFORE VIBRATION)	RECOVERY / STABILIZATION PHASE (AFTER VIBRATION)	PARAMETERS (AFTER RECOVERY)
LEV3020-18	- Visual inspection - Voltage measurement (After 15 minutes powered-on - No load)	2 hours at maximum load - Input: 220 V - 50 Hz - Output: +12 V at 5 A (resistive load)	- Visual Inspection - Voltage measurement (after recovery load)
LEV3468-18	- Visual inspection - Voltage measurement (After 15 minutes powered-on - No load)	2 hours at maximum load - Input: 220 V - 50 Hz - Output: +12 V at 11 A (resistive load)	- Visual Inspection - Voltage measurement (after recovery load)

**PHOTOGRAPHS**



**A3 - PARTICIPANT RESULTS (TEST REPORT #ENV-022-2026)**

 <p><b>BLUEGUIDEEMCLAB</b></p>	<p><b>Proficiency testing LEV3020-18 LAB CODE: 18</b></p>	  <p>082-TEST Joseph Cardijnstraat 21 9420 Erpe-Mere Tel: +32(0)53 43 23 04</p>
---	---	---

# Environmental Test Report

**EUT:**

**LEV3020-18**

**Filename: ENV-022-2026**

**Release: 01**

**Date: 09 Apr. 2026**

ENV-022-2026

Page 1 of 22

	<b>Proficiency testing</b> <b>LEV3020-18</b> <b>LAB CODE: 18</b>	
--	--	--

**Approval Sheet**

Function title		Name	Signature	Date
Technical Support Engineer	Author	Jorn Delyvere		09 Apr. 2026
Test Engineer / Technical manager	Reviewer	Christopher Stokoe		13 Apr. 2026
Managing Director	Approver	Kristof Van Impe		13 Apr. 2026

**Distribution List**

Function title		Name	Date
Physics Coordinator		Esther Casas	13 Apr. 2026

	<b>Proficiency testing</b> <b>LEV3020-18</b> <b>LAB CODE: 18</b>	
--	--	--

**Test Overview and Results**

Test	Test Date	Test result
Vibration Sinusoidal X direction	08 Apr. 2026	Pass*
Vibration Sinusoidal Y direction	08 Apr. 2026	Pass*
Vibration Sinusoidal Z direction	08 Apr. 2026	Pass*

\* = No detailed product specification supplied. Pass criteria based on visual examination & output performance comparison before and after the vibration testing.

	<b>Proficiency testing</b> <b>LEV3020-18</b> <b>LAB CODE: 18</b>	
--	--	--

**Proprietary data notice**

The test Report may not be reproduced other than in full, except with written approval of the issuing laboratory. The test results relate only to the items tested.

**Release overview**

Document	Release	Release date	Author	Description
ENV-022-2026	01	09 Apr. 2026	Jorn Delyvere	Initial release

**Referenced data items**

The table below lists all data items that are used or referenced to in this report (Categories: Customer info, Standards, Other info)

Document name	Release date	Revision	Category	Accreditation
EN 60068-2-6	2008	NA	Standard	YES

Note: Documents provided by the customer are not verified for compliance and are not under control of the laboratory.



**Abbreviations and acronyms**

Abbreviation	
EUT	Equipment Under Test
RH	Relative Humidity

	<b>Proficiency testing</b> <b>LEV3020-18</b> <b>LAB CODE: 18</b>	
--	--	--

**Table of Contents**



APPROVAL SHEET.....	2
DISTRIBUTION LIST.....	2
TEST OVERVIEW AND RESULTS.....	3
PROPRIETARY DATA NOTICE.....	4
RELEASE OVERVIEW.....	4
REFERENCED DATA ITEMS.....	4
ABBREVIATIONS AND ACRONYMS.....	4
TABLE OF CONTENTS.....	5
1. TEST LABORATORY.....	7
2. CUSTOMER IDENTIFICATION.....	7
3. EUT.....	8
3.1 Identification.....	8
3.2 Description.....	8
4. PERFORMED TESTS.....	9
4.1 Vibration Sinusoidal.....	9
4.1.1 Referenced Specification.....	9
4.1.2 Purpose of the test.....	9
4.1.3 Deviations from Test Procedure.....	9
4.1.4 Test parameters.....	9
4.1.5 Pre-Test Control and Initial measurements.....	10
4.1.6 Pre-conditioning.....	10
4.1.7 Test Results.....	11
4.1.7.1 Subdirection.....	11
4.1.7.1.1 Test Setup.....	11
4.1.7.1.2 Test Description.....	11
4.1.7.1.3 Test Profile.....	12
4.1.7.1.4 Pre-Test Control and Initial measurements.....	12
4.1.7.1.5 Post-Test Control.....	12
4.1.7.1.6 Testing.....	13
4.1.7.1.7 Post-Test Control.....	13
4.1.7.1.8 Final measurements.....	13
4.1.7.1.9 Pass/Fail criteria.....	13
4.1.7.1.10 Test Results.....	13
4.1.7.2 Y-Direction.....	14
4.1.7.2.1 Test Setup.....	14
4.1.7.2.2 Test Description.....	14
4.1.7.2.3 Test Profile.....	15
4.1.7.2.4 Pre-Test Control and Initial measurements.....	15
4.1.7.2.5 Pre-conditioning.....	15
4.1.7.2.6 Testing.....	16
4.1.7.2.7 Post-Test Control.....	16

 BLUEGUIDEMCLAB	<b>Proficiency testing LEV3020-18 LAB CODE: 18</b>	 Joseph Cardijnstraat 21 9420 Erpe-Mere Tel: +32(0)53 43 23 04
---	--	--

4.1.7.2.8	Final measurements	16
4.1.7.2.9	Pass-Fail criteria	16
4.1.7.2.10	Test Result	16
4.1.7.3	2-Direction	17
4.1.7.3.1	Test Setup	17
4.1.7.3.2	Test Profile	17
4.1.7.3.3	Test Profile	18
4.1.7.3.4	Pre-Test Control and 'N/A' measurements	18
4.1.7.3.5	Pre-welding link	18
4.1.7.3.6	Welding	19
4.1.7.3.7	Post-Test Control	19
4.1.7.3.8	Final measurements	19
4.1.7.3.9	Pass/Fail criteria	19
4.1.7.3.10	Test Result	19
4.1.8	Post-Test Control	20
4.1.9	Final measurements	21
4.1.10	Pass-Fail criteria	21
4.1.11	Test Result	21
5.	GENERAL CONCLUSION	22
6.	TEST EQUIPMENT	22

ENV-022-2026

Page 6 of 22

 BLUEGUIDEMCLAB	<b>Proficiency testing LEV3020-18 LAB CODE: 18</b>	 Joseph Cardijnstraat 21 9420 Erpe-Mere Tel: +32(0)53 43 23 04
--	--	--

### 1. Test Laboratory

Blue Guide EMC Lab  
Joseph Cardijnstraat 21  
9420 Erpe-Mere  
Belgium  
BE 0862 186 104





### 2. Customer Identification

Applicant	: PT South Quality SAS
Address	: Pareja 3981 C1419GVG Ciudad Buenos Aires Argentina
Contact person	: Esther Casas
Test witnessed by	: -
Test offer	: -

ENV-022-2026

Page 7 of 22

 BLUEGUIDEMCLAB	<b>Proficiency testing LEV3020-18 LAB CODE: 18</b>	 Joseph Cardijnstraat 21 9420 Erpe-Mere Tel: +32(0)53 43 23 04
---	--	--

### 3. EUT

#### 3.1 Identification

Name	: LEV3020-18 (Switching PSU – SIMALED)
EUT identification	: ENV-022-2026
Part ID	: 12V-5A(S)-60w
Serial Number	: -
Manufacturing Date	: -
Firmware release	: -
Manufacturer	: SIMALED





#### 3.2 Description

The EUT is an AC/DC power supply

This information is under the authority and sole responsibility of the manufacturer (legally responsible)

ENV-022-2026

Page 8 of 22

 BLUEGUIDEMCLAB	<b>Proficiency testing LEV3020-18 LAB CODE: 18</b>	 Joseph Cardijnstraat 21 9420 Erpe-Mere Tel: +32(0)53 43 23 04
--	--	--

### 4. Performed Tests

#### 4.1 Vibration Sinusoidal

##### 4.1.1 Referenced Specification

Test performed according to EN 60068-2-6:2008, test for vibration - Sinusoidal

##### 4.1.2 Purpose of the test

The object of the Vibration test is to determine any mechanical weakness and/or degradation in the specified performance of specimens and to use this information, in conjunction with the relevant specification, to decide upon the acceptability of the specimens.

##### 4.1.3 Deviations from Test Procedure

None

##### 4.1.4 Test parameters

Frequency range:	10-500 Hz
Acceleration:	10 m/s <sup>2</sup>
Sweep:	1 octave per minute (round-trip)
Time:	15 minutes each axis

Cross axis motion < 50 % of the specified motion up to 500Hz  
(Yearly verification performed with used head expander & X/Y support tooling)

ENV-022-2026

Page 9 of 22

**Proficiency testing**  
**LEV3020-18**  
**LAB CODE: 18**

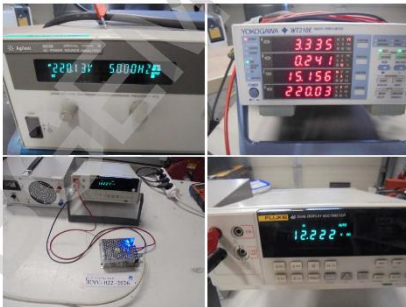
Jointly Certified to:  
ISO 9001:2015  
Tel: +352(0)55 43 23 04

**4.1.5 Pre-Test Control and initial measurements**

- Atmospheric conditions in test lab:
  - Ambient Temperature : 27,3 °C
  - Ambient Relative Humidity : 26,7 %RH
  - Air pressure : 1024,3 hPa



- Visual inspection: No defects observed
- PSU input 220 VAC – 50 Hz
- Output voltage measured after 15 minutes powered on (12 V output, no load): 12,22 VDC



**4.1.6 Pre-conditioning**

- None

**Proficiency testing**  
**LEV3020-18**  
**LAB CODE: 18**

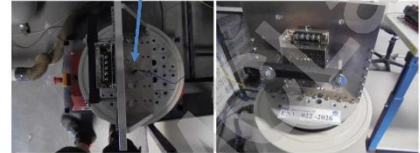
Jointly Certified to:  
ISO 9001:2015  
Tel: +352(0)55 43 23 04

**4.1.7 Testing**

**4.1.7.1 X-Direction**

**4.1.7.1.1 Test Setup**

- Specific mounting or positioning: Normal position
- Measurement of environmental parameters (temperature, air pressure and humidity)
- Position of Accelerometer:



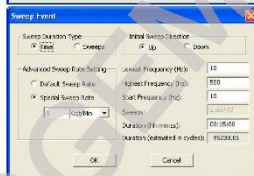
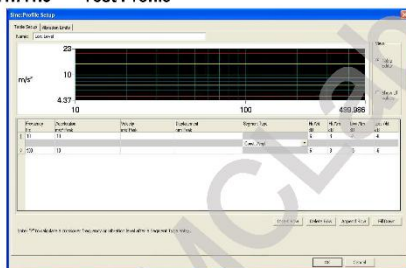
**4.1.7.1.2 Test Description**

- Described in Laboratory Work Instruction WI-0206
- The EUT is non-operational during the whole test
- Control strategy: Single point control
- Filters type: Proportional, Bandwidth 25 %
- Sweep rate: Logarithmic, 1 Oct/min

**Proficiency testing**  
**LEV3020-18**  
**LAB CODE: 18**

Jointly Certified to:  
ISO 9001:2015  
Tel: +352(0)55 43 23 04

**4.1.7.1.3 Test Profile**



**4.1.7.1.4 Pre-Test Control and initial measurements**

See section 4.1.5

**4.1.7.1.5 Pre-conditioning**

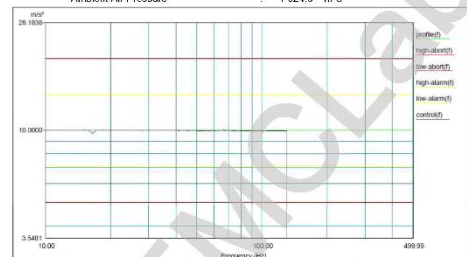
See section 4.1.6

**Proficiency testing**  
**LEV3020-18**  
**LAB CODE: 18**

Jointly Certified to:  
ISO 9001:2015  
Tel: +352(0)55 43 23 04

**4.1.7.1.6 Testing**

- Atmospheric conditions in test lab:
  - Ambient Temperature : 26,7 °C
  - Ambient Relative Humidity : 27,3 %RH
  - Ambient Air Pressure : 1 024,3 hPa



Level: 100% Full Level Time: 00:15:00 Sweep Type: Logarithmic  
Frequency: 130.425964 Hz Time Remaining: 00:00:00 Sweep Rate: 1 Oct/30s

Data saved at 04:33:01 PM, Wednesday, April 08, 2026 Report created at 01:53:04, wednesday, april 8, 2026  
BGEMC 01-070K  
Uncertainty of Measurement Sine Vibration: 9,15 % (in case of 1 accelerometer (BGEMC 01-188K))

**4.1.7.1.7 Post-Test Control**

See section 4.1.8

**4.1.7.1.8 Final measurements**

See section 4.1.9

**4.1.7.1.9 Pass-Fail criteria**

See section 4.1.10

**4.1.7.1.10 Test Result**

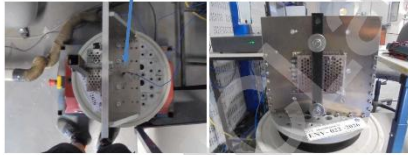
See section 4.1.11

 BLUEGUIDEMCLAB	<b>Proficiency testing</b> <b>LEV3020-18</b> <b>LAB CODE: 18</b>	 B E S L A C Calibration & Metrology 10000, Cantonment Road 605005, Chennai Tel: +91 98401 4323 04
--------------------	--	---

#### 4.1.7.2 Y-Direction

##### 4.1.7.2.1 Test Setup

- Specific mounting or positioning: Normal position
- Measurement of environmental parameters (temperature, air pressure and humidity)
- Position of Accelerometer:

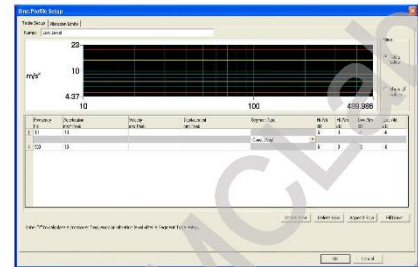


##### 4.1.7.2.2 Test Description

- Described in Laboratory Work Instruction: WI-0206
- The EUT is non-operational during the whole test
- Control strategy: Single point control
- Filters type: Proportional, Bandwidth: 25 %
- Sweep rate: Logarithmic, 1 Oct/min

 BLUEGUIDEMCLAB	<b>Proficiency testing</b> <b>LEV3020-18</b> <b>LAB CODE: 18</b>	 B E S L A C Calibration & Metrology 10000, Cantonment Road 605005, Chennai Tel: +91 98401 4323 04
--------------------	--	---

#### 4.1.7.2.3 Test Profile



#### 4.1.7.2.4 Pre-Test Control and initial measurements

See section 4.1.5

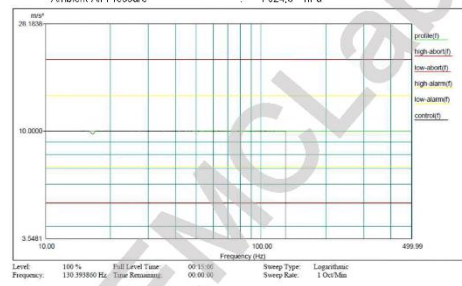
#### 4.1.7.2.5 Pre-conditioning

See section 4.1.6

 BLUEGUIDEMCLAB	<b>Proficiency testing</b> <b>LEV3020-18</b> <b>LAB CODE: 18</b>	 B E S L A C Calibration & Metrology 10000, Cantonment Road 605005, Chennai Tel: +91 98401 4323 04
--------------------	--	---

#### 4.1.7.2.6 Testing

Atmospheric conditions in test lab:  
 Ambient Temperature : 26,7 °C  
 Ambient Relative Humidity : 27,3 %RH  
 Ambient Air Pressure : 1 024,3 hPa



BGEMC 01-070K  
 Uncertainty of Measurement Sine Vibration: 9,15 % (in case of 1 accelerometer (BGEMC 01-168K))

#### 4.1.7.2.7 Post-Test Control

See section 4.1.8

#### 4.1.7.2.8 Final measurements

See section 4.1.9

#### 4.1.7.2.9 Pass-Fail criteria

See section 4.1.10

#### 4.1.7.2.10 Test Result

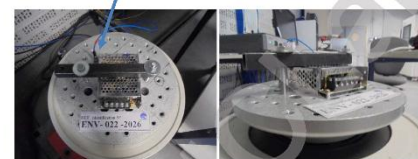
See section 4.1.11

 BLUEGUIDEMCLAB	<b>Proficiency testing</b> <b>LEV3020-18</b> <b>LAB CODE: 18</b>	 B E S L A C Calibration & Metrology 10000, Cantonment Road 605005, Chennai Tel: +91 98401 4323 04
--------------------	--	---

#### 4.1.7.3 Z-Direction

##### 4.1.7.3.1 Test Setup

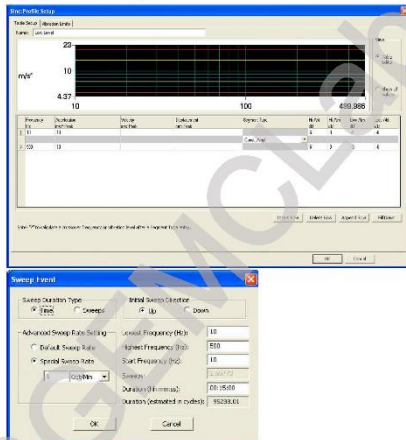
- Specific mounting or positioning: normal position
- Measurement of environmental parameters (temperature, air pressure and humidity)
- Position of Accelerometer:



##### 4.1.7.3.2 Test Description

- Described in Laboratory Work Instruction: WI-0206
- The EUT is non-operational during the whole test
- Control strategy: Single point control
- Filters type: Proportional, Bandwidth: 25 %
- Sweep rate: Logarithmic, 1 Oct/min

**4.1.7.3.3 Test Profile**

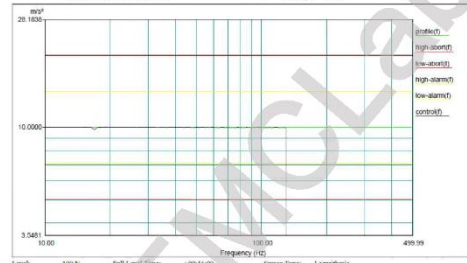


**4.1.7.3.4 Pre-Test Control and initial measurements**  
See section 4.1.5

**4.1.7.3.5 Pre-conditioning**  
See section 4.1.6

**4.1.7.3.6 Testing**

Atmospheric conditions in test lab:  
 Ambient Temperature : 26,7 °C  
 Ambient Relative Humidity : 27,3 %RH  
 Ambient Air Pressure : 1 024,3 hPa



Data saved at 01.02.14 17:54 (Wednesday, April 10, 2019) Report created at 01.06.12, version: april 8, 2019  
 BGE/MC 01-073K  
 Uncertainty of Measurement Size Vibration: 9,15 % (in case of 1 accelerometer (BOEMC 01-15BK))

**4.1.7.3.7 Post-Test Control**  
See section 4.1.8

**4.1.7.3.8 Final measurements**  
See section 4.1.9

**4.1.7.3.9 Pass-Fail criteria**  
See section 4.1.10

**4.1.7.3.10 Test Result**  
See section 4.1.11

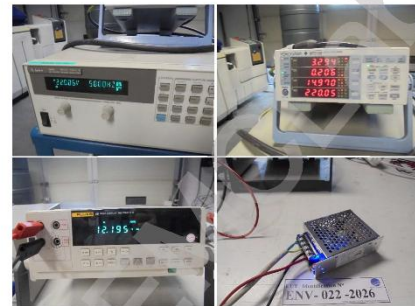
**4.1.8 Post-Test Control**

- Apply the EUT with maximum load for 2 hours (12 V output).
- Input: 220 VAC - 50 Hz
- Output: 12 VDC - 5 A



**4.1.9 Final measurements**

- Measure output voltage (12 V output, no load): 12,20 VDC
- Perform visual examination: No defects observed.






**4.1.10 Pass-Fail criteria**

- No detailed product specifications given so basic requirements applied:
- No load output voltage after test = no load output voltage before test ± 1%
  - No visual degradation observed

**4.1.11 Test Result**

- Output voltage measured after test: 12,20 VDC
- No visual degradation observed

Test Result: PASS

 <b>BLUEGUIDEEMCLAB</b>	<b>Proficiency testing</b> <b>LEV3020-18</b> <b>LAB CODE: 18</b>	  <small>983-TEST</small> Joseph Cardijnstraat 21 9420 Erpe-Mere Tel: +32(0)53 43 23 04
---	--	---



## 5. General Conclusion

EUT passed all testing as described in the test overview.

## 6. Test Equipment

Equipment	Brand	Model	Serial number	Calibration Due
Shaker BGEMC 01-146	LDS	V650	1008709/1	N/A
Shaker Amplifier BGEMC 01-083	LDS	HPAK	1010135/1	N/A
Vibration Controller BGEMC 01-070K	LDS	Laser USB	11450395	09 Mar. 2027
Accelerometer BGEMC 01-188K	Dytran	3049E2	2981	27 Feb. 2027
Temperature/humidity meter BGEMC 01-195K	Testo	608-H1	84702448	26 Mar. 2027
Digital Multimeter Dual display BGEMC 01-124K	Fluke	45	7692015	21 Jul. 2026
Wattmeter BGEMC 01-079K	Yokogawa	WT310E-C1-F/G5	C3RM10018E	25 Jul. 2026
Electronic Load (80 V/25A/400W) BGEMC 01-061	Statron	3227	1411009	N/A
Power Supply BGEMC 01-107	Agilent	6813B	MY41000708	N/A
Digital multimeter PEMC 99-009	Dynatek	D9100	3001178	N/A

**A4 - PARTICIPANT RESULTS (TEST REPORT #ENV-023-2026)**

 <p><b>BLUEGUIDEEMCLAB</b></p>	<p><b>Proficiency testing LEV3468-18 LAB CODE: 18</b></p>	 <p><b>B E L A C</b> 082-TEST Joseph Cardijnstraat 21 9420 Erpe-Mere Tel: +32(0)53 43 23 04</p>
---	---	--

# Environmental Test Report

**EUT:**

**LEV3468-18**

**Filename: ENV-023-2026**

**Release: 01**

**Date: 09 Apr. 2026**

 BLUEGUIDEEMCLAB	<b>Proficiency testing</b> <b>LEV3468-18</b> <b>LAB CODE: 18</b>	 B E S L A C BELGIAN EQUILIBRIUM STANDARDIZATION 4000P Charleroi 2° 1400 B-20-Metro Tel: +32(0)51 43 23 04
---------------------	--	---

### Approval Sheet

Function title		Name	Signature	Date
Technical Support Engineer	Author	Jorn Delyvere		09 Apr. 2026
Test Engineer / Technical manager	Reviewer	Christopher Stokoe		13 Apr. 2026
Managing Director	Approver	Kristof Van Impe		13 Apr. 2026

### Distribution List

Function title		Name	Date
Physics Coordinator		Esther Casas	13 Apr. 2026

 BLUEGUIDEEMCLAB	<b>Proficiency testing</b> <b>LEV3468-18</b> <b>LAB CODE: 18</b>	 B E S L A C BELGIAN EQUILIBRIUM STANDARDIZATION 4000P Charleroi 2° 1400 B-20-Metro Tel: +32(0)51 43 23 04
---------------------	--	---

### Test Overview and Results

Test	Test Date	Test result
Vibration Sinusoidal X direction	09 Apr. 2026	Pass*
Vibration Sinusoidal Y direction	09 Apr. 2026	Pass*
Vibration Sinusoidal Z direction	09 Apr. 2026	Pass*

\* = No detailed product specification supplied. Pass criteria based on visual examination & output performance comparison before and after the vibration testing.

 BLUEGUIDEEMCLAB	<b>Proficiency testing</b> <b>LEV3468-18</b> <b>LAB CODE: 18</b>	 B E S L A C BELGIAN EQUILIBRIUM STANDARDIZATION 4000P Charleroi 2° 1400 B-20-Metro Tel: +32(0)51 43 23 04
---------------------	--	---

### Proprietary data notice

The test Report may not be reproduced other than in full, except with written approval of the issuing laboratory. The test results relate only to the items tested.

### Release overview

Document	Release	Release date	Author	Description
ENV-023-2026	01	09 Apr. 2026	Jorn Delyvere	Initial release

### Referenced data items

The table below lists all data items that are used or referenced to in this report (Categories: Customer info, Standards, Other info)

Document name	Release date	Revision	Category	Accreditation
EN 60068-2-6	2008	NA	Standard	YES

Note: Documents provided by the customer are not verified for compliance and are not under control of the laboratory.

### Abbreviations and acronyms

Abbreviation	
EUT	Equipment Under Test
RH	Relative Humidity

 BLUEGUIDEEMCLAB	<b>Proficiency testing</b> <b>LEV3468-18</b> <b>LAB CODE: 18</b>	 B E S L A C BELGIAN EQUILIBRIUM STANDARDIZATION 4000P Charleroi 2° 1400 B-20-Metro Tel: +32(0)51 43 23 04
---------------------	--	---

### Table of Contents

APPROVAL SHEET.....	2
DISTRIBUTION LIST.....	2
TEST OVERVIEW AND RESULTS.....	3
PROPRIETARY DATA NOTICE.....	4
RELEASE OVERVIEW.....	4
REFERENCED DATA ITEMS.....	4
ABBREVIATIONS AND ACRONYMS.....	4
TABLE OF CONTENTS.....	5
1. TEST LABORATORY.....	7
2. CUSTOMER IDENTIFICATION.....	7
3. EUT.....	8
3.1 Identification.....	8
3.2 Description.....	8
4. PERFORMED TESTS.....	9
4.1 Vibration Sinusoidal.....	9
4.1.1 Referenced Specification.....	9
4.1.2 Purpose of the test.....	9
4.1.3 Deviations from Test Procedure.....	9
4.1.4 Test parameters.....	9
4.1.5 Pre-Test Control and Initial measurements.....	10
4.1.6 Pre-conditioning.....	10
4.1.7 Testing.....	11
4.1.7.1 Sub-direction.....	11
4.1.7.1.1 Test Setup.....	11
4.1.7.1.2 Test Description.....	11
4.1.7.1.3 Test Profile.....	12
4.1.7.1.4 Pre-Test Control and Initial measurements.....	12
4.1.7.1.5 Post-Test Control.....	12
4.1.7.1.6 Testing.....	13
4.1.7.1.7 Post-Test Control.....	13
4.1.7.1.8 Final measurements.....	13
4.1.7.1.9 Pass/Fail criteria.....	13
4.1.7.1.10 Test Results.....	13
4.1.7.2 Y-Direction.....	14
4.1.7.2.1 Test Setup.....	14
4.1.7.2.2 Test Description.....	14
4.1.7.2.3 Test Profile.....	15
4.1.7.2.4 Pre-Test Control and Initial measurements.....	15
4.1.7.2.5 Pre-conditioning.....	15
4.1.7.2.6 Testing.....	16
4.1.7.2.7 Post-Test Control.....	16

 BLUEGUIDEEMCLAB	<b>Proficiency testing</b> <b>LEV3468-18</b> <b>LAB CODE: 18</b>	 B E L A C Joseph Cardijnstraat 21 9420 Espel-Mere Tel: +32(0)53 43 23 04
---------------------	--	---

4.1.7.2.8	Final measurements	16
4.1.7.2.9	Pass-Fail criteria	16
4.1.7.2.10	Test Result	16
4.1.7.3	Z-Direction	17
4.1.7.3.1	Test Setup	17
4.1.7.3.2	Test base-join	17
4.1.7.3.3	Test Profile	18
4.1.7.3.4	Pre-Test Control and 'in' measurements	18
4.1.7.3.5	Pre-conditioning	18
4.1.7.3.6	Testing	19
4.1.7.3.7	Post-Test Control	19
4.1.7.3.8	Final measurements	19
4.1.7.3.9	Pass-fail criteria	19
4.1.7.3.10	Test Result	19
4.1.8	Post-Test Control	20
4.1.9	Final measurements	21
4.1.10	Pass-Fail criteria	21
4.1.11	Test Result	21
5.	GENERAL CONCLUSION	22
6.	TEST EQUIPMENT	22

 BLUEGUIDEEMCLAB	<b>Proficiency testing</b> <b>LEV3468-18</b> <b>LAB CODE: 18</b>	 B E L A C Joseph Cardijnstraat 21 9420 Espel-Mere Tel: +32(0)53 43 23 04
---------------------	--	---

### 1. Test Laboratory

Blue Guide EMC Lab  
 Joseph Cardijnstraat 21  
 9420 Espel-Mere  
 Belgium  
 BE 0882 186 104



### 2. Customer Identification

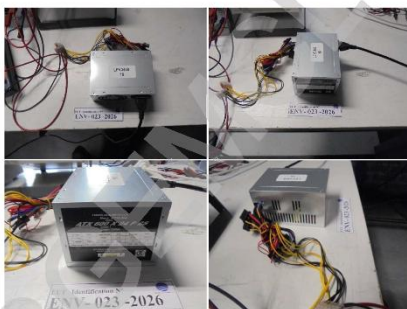
Applicant : PT South Quality SAS  
 Address : Pareja 3981  
 C1419CV3  
 Ciudad Buenos Aires  
 Argentina  
 Contact person : Esther Casas  
 Test witnessed by : -  
 Test offer : -

 BLUEGUIDEEMCLAB	<b>Proficiency testing</b> <b>LEV3468-18</b> <b>LAB CODE: 18</b>	 B E L A C Joseph Cardijnstraat 21 9420 Espel-Mere Tel: +32(0)53 43 23 04
---------------------	--	---

### 3. EUT

#### 3.1 Identification

Name : LEV3468-18 (Switching PSU – ACONCAWA)  
 EUT Identification : ENV-023-2026  
 Part ID : ATX 600 X 24 P 2S  
 Serial Number : -  
 Manufacturing Date : -  
 Firmware release : -  
 Manufacturer : ACONCAWA



#### 3.2 Description

The EUT is an AC/DC power supply

This information is under the authority and sole responsibility of the manufacturer (legally responsible)

 BLUEGUIDEEMCLAB	<b>Proficiency testing</b> <b>LEV3468-18</b> <b>LAB CODE: 18</b>	 B E L A C Joseph Cardijnstraat 21 9420 Espel-Mere Tel: +32(0)53 43 23 04
---------------------	--	---

### 4. Performed Tests

#### 4.1 Vibration Sinusoidal

##### 4.1.1 Referenced Specification

Test performed according to EN 60068-2-6:2008, test for vibration - Sinusoidal.

##### 4.1.2 Purpose of the test

The object of the Vibration test is to determine any mechanical weakness and/or degradation in the specified performance of specimens and to use this information, in conjunction with the relevant specification, to decide upon the acceptability of the specimens.

##### 4.1.3 Deviations from Test Procedure

None

##### 4.1.4 Test parameters

Frequency range: 10-500 Hz  
 Acceleration: 10 ms<sup>-2</sup>  
 Sweep: 1 octave per minute (round-trip)  
 Time: 15 minutes each axis

Cross axis motion < 50 % of the specified motion up to 500Hz  
 (Yearly verification performed with used head expander & XY support tooling)

**Proficiency testing**  
**LEV3468-18**  
**LAB CODE: 18**

certified Calibration 2<sup>nd</sup>  
ISO 17025-Metro  
Tel: +352(0)53 43 23 04

**4.1.5 Pre-Test Control and initial measurements**

- Atmospheric conditions in test lab:
  - Ambient Temperature : 23,9 °C
  - Ambient Relative Humidity : 35,3 %RH
  - Air pressure : 1018,9 hPa



- Visual inspection: No defects observed
- PSU input 220 VAC – 50 Hz
- Output voltage measured after 15 minutes powered on (12V output, no load): 12,29 VDC



**4.1.6 Pre-conditioning**

- None

ENV-023-2026

Page 10 of 22

**Proficiency testing**  
**LEV3468-18**  
**LAB CODE: 18**

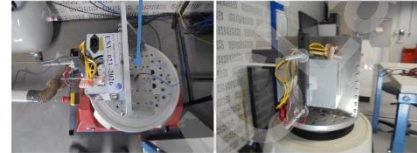
certified Calibration 2<sup>nd</sup>  
ISO 17025-Metro  
Tel: +352(0)53 43 23 04

**4.1.7 Testing**

**4.1.7.1 X-Direction**

**4.1.7.1.1 Test Setup**

- Specific mounting or positioning: Normal position
- Measurement of environmental parameters (temperature, air pressure and humidity)
- Position of Accelerometer:



**4.1.7.1.2 Test Description**

- Described in Laboratory Work Instruction WI-0206
- The EUT is non-operational during the whole test
- Control strategy: Single point control
- Filters type: Proportional, Bandwidth 25 %
- Sweep rate: Logarithmic, 1 Oct/min

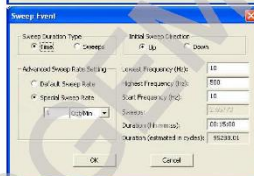
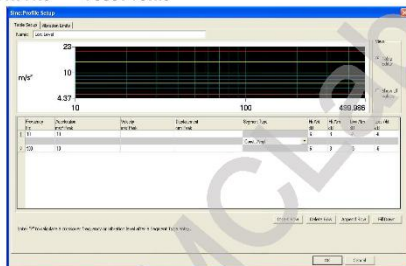
ENV-023-2026

Page 11 of 22

**Proficiency testing**  
**LEV3468-18**  
**LAB CODE: 18**

certified Calibration 2<sup>nd</sup>  
ISO 17025-Metro  
Tel: +352(0)53 43 23 04

**4.1.7.1.3 Test Profile**



**4.1.7.1.4 Pre-Test Control and initial measurements**

See section 4.1.5

**4.1.7.1.5 Pre-conditioning**

See section 4.1.6

ENV-023-2026

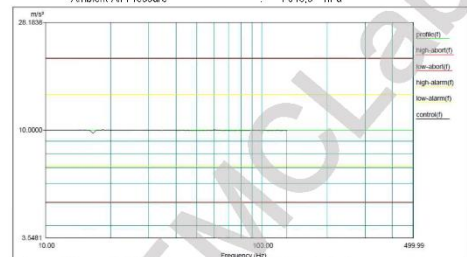
Page 12 of 22

**Proficiency testing**  
**LEV3468-18**  
**LAB CODE: 18**

certified Calibration 2<sup>nd</sup>  
ISO 17025-Metro  
Tel: +352(0)53 43 23 04

**4.1.7.1.6 Testing**

- Atmospheric conditions in test lab:
  - Ambient Temperature : 23,9 °C
  - Ambient Relative Humidity : 35,3 %RH
  - Ambient Air Pressure : 1 018,9 hPa



Level: 100% Full Level Time: 00:15:00 Sweep Type: Logarithmic  
Frequency: 130.999800 Hz Time Remaining: 00:00:00 Sweep Rate: 1 Oct/Min

Data saved at 10:10:47 AM, Tuesday, April 09, 2025 Report created at 10:10:34, Wednesday, April 9, 2025

BGEMC 01-070K  
Uncertainty of Measurement Sine Vibration: 9,15 % (in case of 1 accelerometer (BGEMC 01-188K))

**4.1.7.1.7 Post-Test Control**

See section 4.1.8

**4.1.7.1.8 Final measurements**

See section 4.1.9

**4.1.7.1.9 Pass-Fail criteria**

See section 4.1.10

**4.1.7.1.10 Test Result**

See section 4.1.11

ENV-023-2026

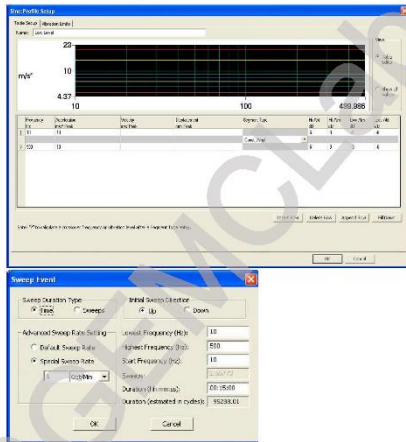
Page 13 of 22



Proficiency testing  
**LEV3468-18**  
**LAB CODE: 18**

ISO/IEC 17025:2017  
SAC 010-20-Metro  
Tel: +352(0)53 43 23 04

**4.1.7.3.3 Test Profile**



**4.1.7.3.4 Pre-Test Control and initial measurements**

See section 4.1.5

**4.1.7.3.5 Pre-conditioning**

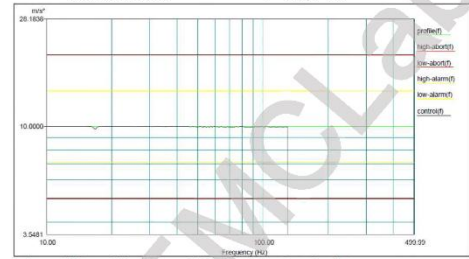
See section 4.1.6

Proficiency testing  
**LEV3468-18**  
**LAB CODE: 18**

ISO/IEC 17025:2017  
SAC 010-20-Metro  
Tel: +352(0)53 43 23 04

**4.1.7.3.6 Testing**

Atmospheric conditions in test lab:  
 Ambient Temperature : 23,9 °C  
 Ambient Relative Humidity : 35,3 %RH  
 Ambient Air Pressure : 1 018,9 hPa



Level: 100 % Full Level Time: 00:15:00 Sweep Type: Logarithmic  
 Frequency: 130.443317 Hz Time Remaining: 00:00:00 Sweep Rate: 1.00/30s

Date issued at 10:31:18 AM, Thursday, April 09, 2026 Report created at 10:31:21, Wednesday, April 9, 2026  
 BEGEM 01-070K  
 Uncertainty of Measurement Sine Vibration: 9,15 % (in case of 1 accelerometer (BEGEM 01-120K))

**4.1.7.3.7 Post-Test Control**

See section 4.1.8

**4.1.7.3.8 Final measurements**

See section 4.1.9

**4.1.7.3.9 Pass-Fail criteria**

See section 4.1.10

**4.1.7.3.10 Test Result**

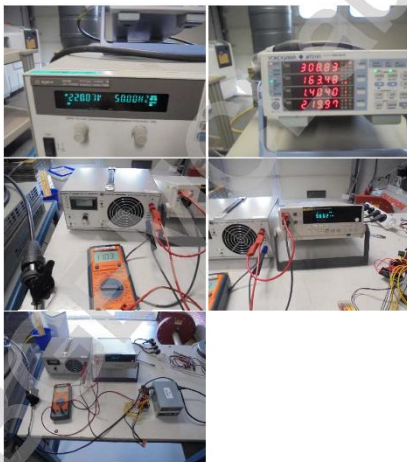
See section 4.1.11

Proficiency testing  
**LEV3468-18**  
**LAB CODE: 18**

ISO/IEC 17025:2017  
SAC 010-20-Metro  
Tel: +352(0)53 43 23 04

**4.1.8 Post-Test Control**

- Apply the EUT with a maximum load for 2 hours (12 V output).
- Input: 220 VAC - 50 Hz
- Output: 12 VDC - 11 A



Proficiency testing  
**LEV3468-18**  
**LAB CODE: 18**

ISO/IEC 17025:2017  
SAC 010-20-Metro  
Tel: +352(0)53 43 23 04

**4.1.9 Final measurements**

- Measure output voltage (12 V output, no load): 12,25 VDC
- Perform visual examination: No defects observed.



**4.1.10 Pass-Fail criteria**



No detailed product specifications given so basic requirements applied:

- No load output voltage after test = no load output voltage before test ± 1%
- No visual degradation observed

**4.1.11 Test Result**

- Output voltage measured after test: 12,25 VDC
- No visual degradation observed

Test Result: PASS

 <b>BLUEGUIDEEMCLAB</b>	<b>Proficiency testing</b> <b>LEV3468-18</b> <b>LAB CODE: 18</b>	 <small>082-TEST</small> Joseph Cardijnstraat 21 9420 Erpe-Mere Tel: +32(0)53 43 23 04
---	--	---

## 5. General Conclusion

EUT passed all testing as described in the test overview.

## 6. Test Equipment

Equipment	Brand	Model	Serial number	Calibration Due
Shaker BGEMC 01-146	LDS	V650	1008709/1	N/A
Shaker Amplifier BGEMC 01-083	LDS	HPAK	1010135/1	N/A
Vibration Controller BGEMC 01-070K	LDS	Laser USB	11450395	09 Mar. 2027
Accelerometer BGEMC 01-188K	Dytran	3049E2	2981	27 Feb. 2027
Temperature/humidity meter BGEMC 01-195K	Testo	608-H1	84702448	26 Mar. 2027
Digital Multimeter Dual display BGEMC 01-124K	Fluke	45	7692015	21 Jul. 2026
Wattmeter BGEMC 01-079K	Yokogawa	WT310E-C1- F/G5	C3RM10018E	25 Jul. 2026
Electronic Load (80 V/25A/400W) BGEMC 01-061	Statron	3227	1411009	N/A
Power Supply BGEMC 01-107	Agilent	6813B	MY41000708	N/A
Digital multimeter PEMC 99-009	Dynatek	D9100	3001178	N/A

# APPENDIX B

**VOID**

**----- END OF REPORT -----**